

New, Rebuilt, and Remanufactured Proofers

RACK PROOFERS
Super Manual Proof Box
Traveling Rack Proofers

TRAY PROOFERS
Floor Mounted Tray Proofer
Overhead Tray Proofers

SPIRAL PROOFERS
Single Enclosed Spiral
Double Spiral Configurations

PROOFER UPGRADES
Proofer Extensions
Proofers Remanufactured
AC Unit Upgrades

PROOFER SERVICES
Proofer Rebuilds and Repairs
Proofer Replacement Parts
Proofer Installations
Proofer Relocations

RELATED EQUIPMENT
Retarding Systems
Fermentation Rooms



The Henry Group's proofing solutions are designed to provide consistent reliable proofing options for a variety of production facilities.

We offer proofing systems for fully automated and semi-automatic production environments where consistent proof time is critical.

800.356.7591



Proofing Solutions

Traveling Rack Proofer

The Henry Group's Traveling Rack Proofer is designed with monorail guides for racks that are configured to handle standard or specialty pans. Proof Racks are powered through the entire length of travel with variable dwell time to alter proof times. Air curtains at rack doorways maintain a more consistent proofing environment. Man doors provide easy access for maintenance and sanitation. The Air Waterwash System maintains proper control of heat and humidity conditions to maintain a constant proofing environment. Main drive is external to proof environment, and includes a chain tensioning take-up system. Exterior uses Cam-Lock enclosure panels with stainless interior and exterior finish for maintaining an energy efficient and sanitary environment. Moisture resistant fluorescent lighting fixtures. PLC's with operator interface and digital readout of proof time minutes. Digital "wet" and "dry" heat controls. Optional Stainless structure, Automatic Rack Loaders and Unloaders, and Automatic pneumatic doors are also available. Another option is a Heat exchanger for the Air Waterwash System allowing for steam condensation return (no live steam in product zone).

Spiral Proofers

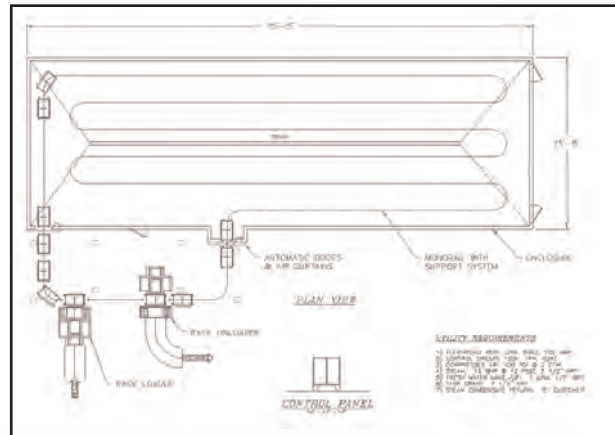
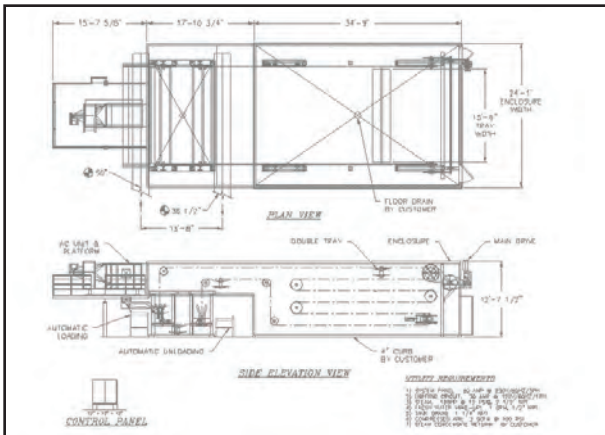
The Henry Group's Spiral Proofers are designed to provide proofing while being conveyed through a proofing room with heat and humidity controls. A 100% Stainless Frame and support structure provides durability and sanitary design. Programmable Logic Controls with VFD's and an operator interface provides a variable process time. Versatile layout configurations and sizing capabilities provide many system design options. An optional work platform and stairs are available for multi-story spiral systems. Relative Humidity is regulated by digital controllers and electronic sensors with modutrol steam valves to assure accuracy. Sanitation is improved with the use of an optional belt washing system. The belt washer utilizes line water pressure through spray nozzles to clean away product debris.

Super Proof Box

The Henry Group's Super Manual Proof Box is designed to assure an even proofing environment. Exterior Cam-Lock enclosure panels have stainless interior and exterior finish for maintaining an energy efficient and sanitary environment. Moisture resistant fluorescent lighting fixtures. The control panel contains everything necessary to regulate "wet" and "dry" heat for proofing, in addition to managing the pumps and fan motors. Equipped with Stainless Steel Proof Box Racks either on casters or with monorail attachments. Exterior ductwork construction is 22ga. 304-2B stainless with easy removable clean outs. The waterwash AC unit cleans and purifies the air at each recycle for greater sanitation and more heat and humidity control. The supply and distribution duct system is designed to supply air flow along the full length of each proofing lane, assuring an even proofing environment. Heavy-Duty structural tubing, rack guides, structural box support, and hot dipped galvanized which doubles as interior conditioned air supply ducts. The entire surface is sealed and easy to clean for greater sanitation.

Automatic Tray Proofer

The Henry Group's Automatic Tray Proofer is equipped with push bar loading and unloading along with lightweight double hung proofer trays. Trays are constructed of aluminum cross tube supports with bolt on quick change stainless fingers with magnetic strips for non-slip grip on steel pans. The entire system is constructed of either stainless or hot dipped galvanized components assuring that all structural members are either stainless or plated. Exterior Cam-Lock enclosure panels have stainless interior and exterior finish for maintaining an energy efficient and sanitary environment. Air Waterwash System maintains proper control of heat and humidity for a constant proofing environment. A variable frequency controller provides adjustable proof times. Relative Humidity is regulated by digital controllers and electronic sensors with modutrol steam valves to assure accuracy.



P.O. Box 8246 Greenville, TX 75404
800.356.7591 903.883.2002 Fax: 903.883.3210
www.thehenrygroup.com email: sales@THG1.com



Due to The Henry Group's continual commitment to quality and performance, all Products and Services may change without notice.
© 2010 The Henry Group, Inc.